

# APSE Waste & Recycling Advisory Group

## 20<sup>th</sup> January 2010

### Local Authority Update

Charlie Devine

Programme Manager –  
Recycling





# What's Coming Up

- Resource Efficiency / WRAP's work
- Current WRAP Projects
- Markets
- Waste analysis
- A quick update for 2010!
- Training
- Questions



# Resource Efficiency





# Current WRAP Projects

- Construction
- Utilities
- Organics
- Agriculture
- Retailers
- Community sector
- Business development
- **Local authorities**





# Materials Markets

- Vast improvement over the last year with double figure increases
- Still an element of volatility / instability
- Concern over Chinese market following huge fiscal stimulus (\$585 billion)
- Quality seen as the route forward
- Joint procurement to secure best prices?
- WRAP now working with letsrecycle.com to produce MPR fortnightly



# Waste Compositional Study

- Establish what's in the bin
- Included domestic & trade waste, litter collections, grounds maintenance waste and bulky uplifts
- What does it tell us?
- What further actions do we have to take?
- **Strong focus on food waste**



# Dealing with food waste is nothing new...









# Where is it all going.....

Household kerbside  
waste and recycling  
and HWRCs

5.8 million tonnes per annum

Sewer

1.8 million tonnes per annum

Home composting  
and fed to animals

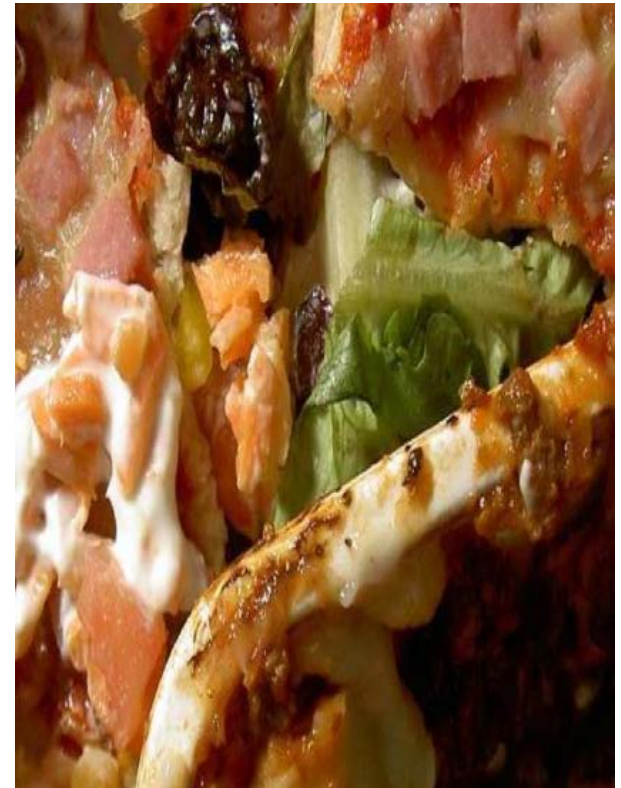
0.7 million tonnes per annum





# A Bit About Food Waste Research

- Approx **8.3 mt** of household food and drink waste is produced each year in the UK **of this 5.3 mt could have been eaten...**
- **...which costs UK consumers £12bn a year...**
- **...for families with children this is over £50 a month**
- If we stopped throwing food and drink away, it would **save the equivalent of at least 20 mt of CO<sub>2</sub>e**. That's like **cutting the number of cars on our roads by 25%**
- We throw food out for two main reasons: 1) **we let food go off** costing £6.7bn/year; 2) **we cook or prepare too much**, costing us £4.8 billion per year





# How are food collections being implemented in UK?

- 70 UK Authorities are collecting food and garden waste combined
  - Added to garden and collected weekly/fortnightly
- 78 UK Authorities are operating food only services
  - Separate round
  - Collected on same vehicle as recycling/refuse





# What About 2010?

- Working with the Third Sector
  - Increase funding grants
  - Re-use
  - Marginal / fringe applications
- Recycle on the Go!
  - Joint retailer, industry & BRC project – Coca Cola led





# The Courtauld Commitment?

- Courtauld Commitment Phase 2 will run from 2010-2012
- A move away from solely weight-based targets
- It will introduce targets for 2010-2012 that seek to realise the resource and carbon benefits of waste prevention
- Packaging and food waste focus will remain and will cover grocery supply chain wastes as well as household waste
- All targets are absolute, which is consistent with UK Governments' targets and EU policy and strategy.



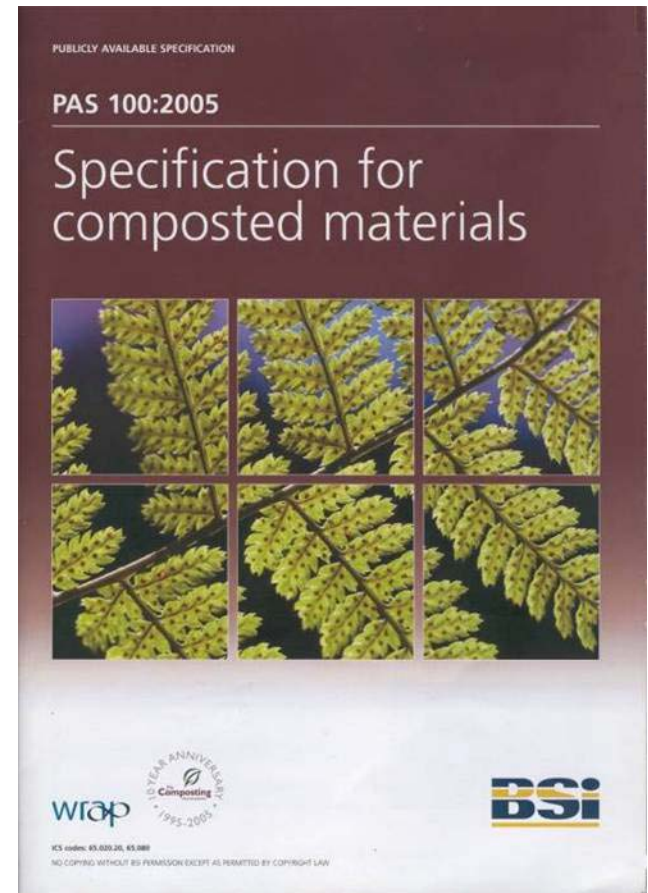
# Organics Programme

- Capital grants programme for in vessel and AD infrastructure
  - £6 million fund – 2008 - 2011
  - 3 capital grants rounds
  - 4 Sites commissioned – 65,000 tonnes capacity
  - 6 Preferred bidders – 138,500 tonnes of capacity
  - Now in delivery phase
- Market development for materials
- Agricultural trials
- New and revised quality standards



# PAS100 update

- Changing industry
- Implementation experience identifies areas for improvement
- Findings from scientific research
- Gathered data on compost quality
- Respond to stakeholder issues





# PAS110 Update

- Defined input list
  - Source segregated biowastes
  - Biodegradable non-waste materials
  - Allows for packaged biowaste
  - Supply agreement with the waste supplier
    - AD operator knows what inputs are
    - AD operator undertakes analysis as appropriate
    - Process control – HACCP
  - A badly run digester will produce a bad product
    - Minimum quality of whole digestate, separated liquor & separated fibre

## PAS 110:2009

Specification for whole digestate, separated liquor and separated fibre derived from the anaerobic digestion of source-segregated biodegradable materials



**WRAP AD Training courses**  
**WRAP AD operator support for certification**





# Local Authority Training (free)

- Food waste collections - 25<sup>th</sup> February Perth
- Working with the Community Sector – 11<sup>th</sup> & 12<sup>th</sup> March, Glasgow
- Recycling Managers Training events
- Bespoke operator training
- Ongoing training courses across the UK
  - Web based information

# WASTE COLLECTION COMMITMENT

Commit to a good waste and  
recycling service

[Find out more »](#)



WRAP Annual Conference 2009 –  
Northern Ireland

## What's new

- > [The Waste Collection Commitment](#)
- > [Working with the third sector](#)
- > [Gate Fees Report 2009](#)

## Research & guidance

- > [Collections & recycling](#)
- > [Communications](#)
- > [Waste prevention](#)

## Communication campaigns

- > [Recycle Now partners](#)
- > [Love Food Hate Waste partners](#)

## Support & funding

- > [Collections & recycling](#)
- > [Waste prevention](#)
- > [Communications](#)

## Training & events

- > [Upcoming training & events](#)
- > [WRAP's Virtual Learning Environment](#)
- > [News & networks](#)

## News & networks

- > [Latest press releases](#)
- > [Sign up to the newsletters](#)

**WRAP's vision is a world without waste, where resources are used sustainably.**  
We work with businesses and individuals to help them reap the benefits of reducing waste, develop sustainable products and use resources in an efficient way.

[What is WRAP?](#) | [What is resource efficiency?](#)

## HOW CAN WE HELP YOU?

I am a ...

## PUBLICATIONS



**Meeting the UK climate change challenge: The contribution of resource efficiency – Full report**  
4 Nov 2009

[More publications](#)

## Agriculture & horticulture



### Compost suppliers

Find a supplier of quality compost near you.



### Frameworks for the use of compost in agriculture in Europe

Compost and digestate quality, production volumes, and specifications for use in different agricultural sectors in Europe



### Machinery for applying quality compost to benefit row

## WRAP AROUND THE UK

Select a country

## WHATS NEW?

**Recession pushes UK businesses to use resources more efficiently**  
4 December 2009  
New research launched today

**Really Rubbish Orchestra serenades Christmas shoppers**  
1 December 2009  
Highlighting how easy it is now to recycle your small electricals.



## WASTE COLLECTION COMMITMENT

- Established as a joint LGA / WRAP initiative
- Attempt to underpin the principles of domestic waste & recycling services
- Demonstrate that the service meets the needs of residents & is VFM
- Voluntary commitment

[www.wrap.org.uk/lacommitment](http://www.wrap.org.uk/lacommitment)

**MAKE YOUR COMMITMENT**  
to a good waste and recycling service

Sign up now >





# Questions?

**Tel: 01786 468896**

**Mob: 07515 598251**

**Email: [charlie.devine@wrap.org.uk](mailto:charlie.devine@wrap.org.uk)**